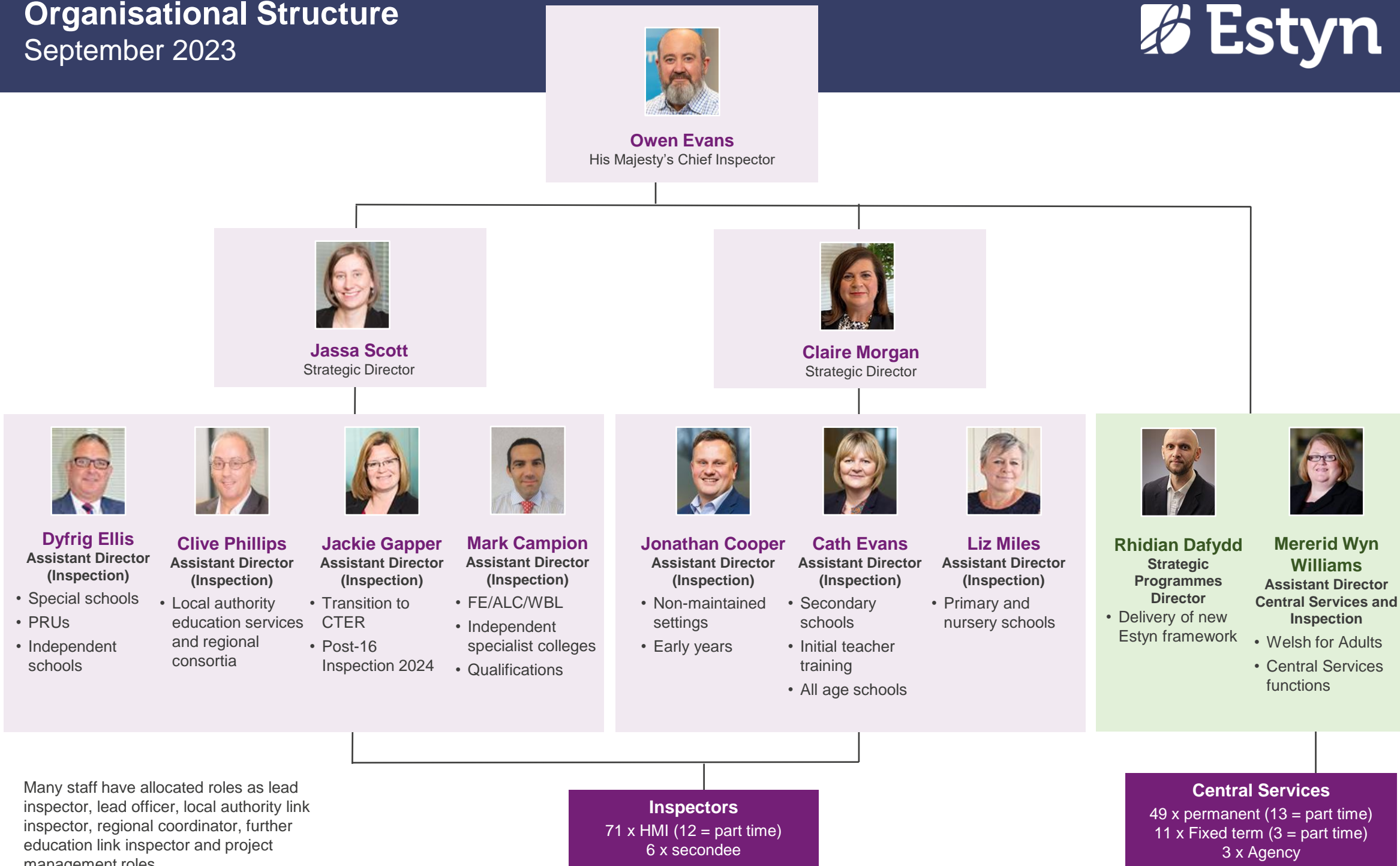


Organisational Structure

September 2023



Owen Evans
His Majesty's Chief Inspector



Jassa Scott
Strategic Director



Claire Morgan
Strategic Director



Dyfrig Ellis
Assistant Director
(Inspection)

- Special schools
- PRUs
- Independent schools



Clive Phillips
Assistant Director
(Inspection)

- Local authority education services and regional consortia



Jackie Gapper
Assistant Director
(Inspection)

- Transition to CTER
- Post-16 Inspection 2024



Mark Campion
Assistant Director
(Inspection)

- FE/ALC/WBL
- Independent specialist colleges
- Qualifications



Jonathan Cooper
Assistant Director
(Inspection)

- Non-maintained settings
- Early years



Cath Evans
Assistant Director
(Inspection)

- Secondary schools
- Initial teacher training
- All age schools



Liz Miles
Assistant Director
(Inspection)

- Primary and nursery schools



Rhidian Dafydd
Strategic Programmes
Director

- Delivery of new Estyn framework



Mererid Wyn Williams
Assistant Director
Central Services and
Inspection

- Welsh for Adults
- Central Services functions

Many staff have allocated roles as lead inspector, lead officer, local authority link inspector, regional coordinator, further education link inspector and project management roles.

Inspectors
71 x HMI (12 = part time)
6 x secondee

Central Services
49 x permanent (13 = part time)
11 x Fixed term (3 = part time)
3 x Agency